



08.25.15

# Presentation to Staff



**Creating a Shared Vision  
for High School Facilities  
St. Cloud Area School District**



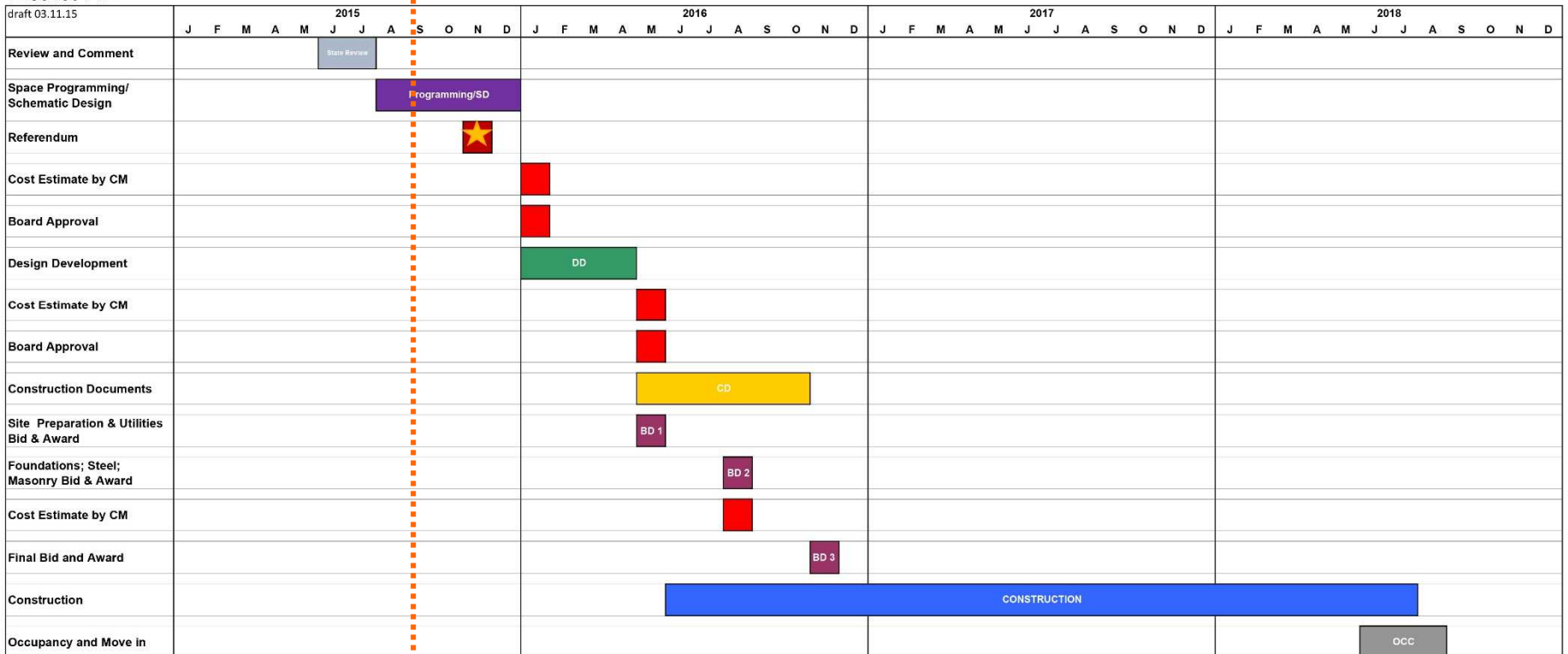
**CUNINGHAM**  
G R O U P



# Agenda

- WELCOME
- WHERE HAVE WE BEEN?
- WHERE ARE WE?
- WHERE ARE WE GOING?

## Proposed New High School Schedule District 742



← We are here.



# Decisions

***School Board*** – Makes final project decisions.

***Steering Committee*** – Makes recommendations to School Board.

***High School Design Committee*** – Representative Group from both High Schools and the community with responsibility to the whole, not just their specific area. Big picture thinking; Makes recommendations to Steering.

***Programming Sub-Groups (specific to New and Apollo)*** – small groups that make recommendations to the High School Design Committee for specific area programs.

# mission



“Our mission is to create a safe and caring climate and culture in which we prepare, **engage**, **educate**, **empower**, and **inspire** learners in partnership with their surrounding community to be successful in today’s and tomorrow’s society.”



# core values



WE BELIEVE everyone deserves **equitable access** to the highest quality of learning to maximize individual potential.

WE BELIEVE **multiple and differing perspectives** contribute to informed decision-making and learning.

WE BELIEVE we all benefit when communities work together toward **common goals**.

WE BELIEVE life-long learning is essential for individuals to shape and **thrive in our global society**.

WE BELIEVE the greatest level of **individual success** is achieved through **shared ownership** by the individual, families, schools and our communities.



## SHARED VISION

**We see** inviting, student-centered designs that integrate environmental, community and technological resources to cultivate a love of learning in all students. By celebrating beauty, function and sustainability, we build on a tradition of excellence that serves as a source of pride for students, staff and the community.

- Schools foster global preparedness, holistic development and engagement through multiple modes of learning.
- Students and staff strive for success within equitable, inclusive and collaborative settings.
- Students engage in theoretical and applied learning settings that build bridges between subjects, classrooms, student groups and the community.



# DESIGN PARAMETERS

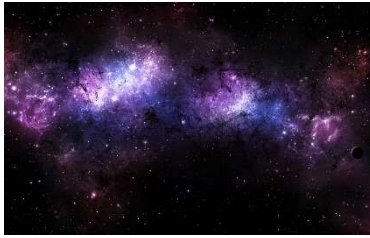
- Aligned with District's **Strategic Plan**
- This is about **transformation**.
- Focused on the future (**21<sup>st</sup> Century Learning**)
- Focused on **student success**
- **Technology rich**
- **Equitable** access to programs
- Full high school **activities/athletic experience**
- This is about **2 equitable high schools**
- Plan for a design capacity of up to **1800 students** for each HS.
- $(1800 \times 200 \text{ sf/student} = 360,000 \text{ sf each})$
- **No loss of instructional time**



**Where we were...**



# DISCOVERY



## visionary



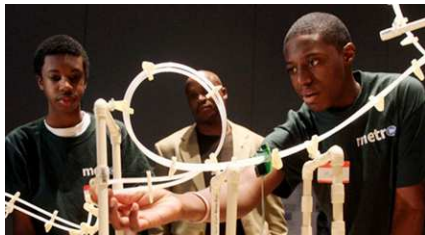
## sense of mission



## light and truth



# INNOVATION



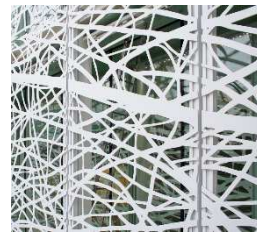
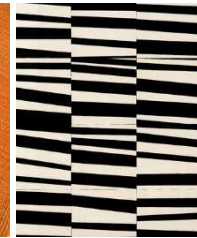


**NEW HIGH SCHOOL LEVEL 1**

**2 STORY**



# Patterns



## dynamic & diffused LIGHT



## BIOLOGICAL DIVERSITY



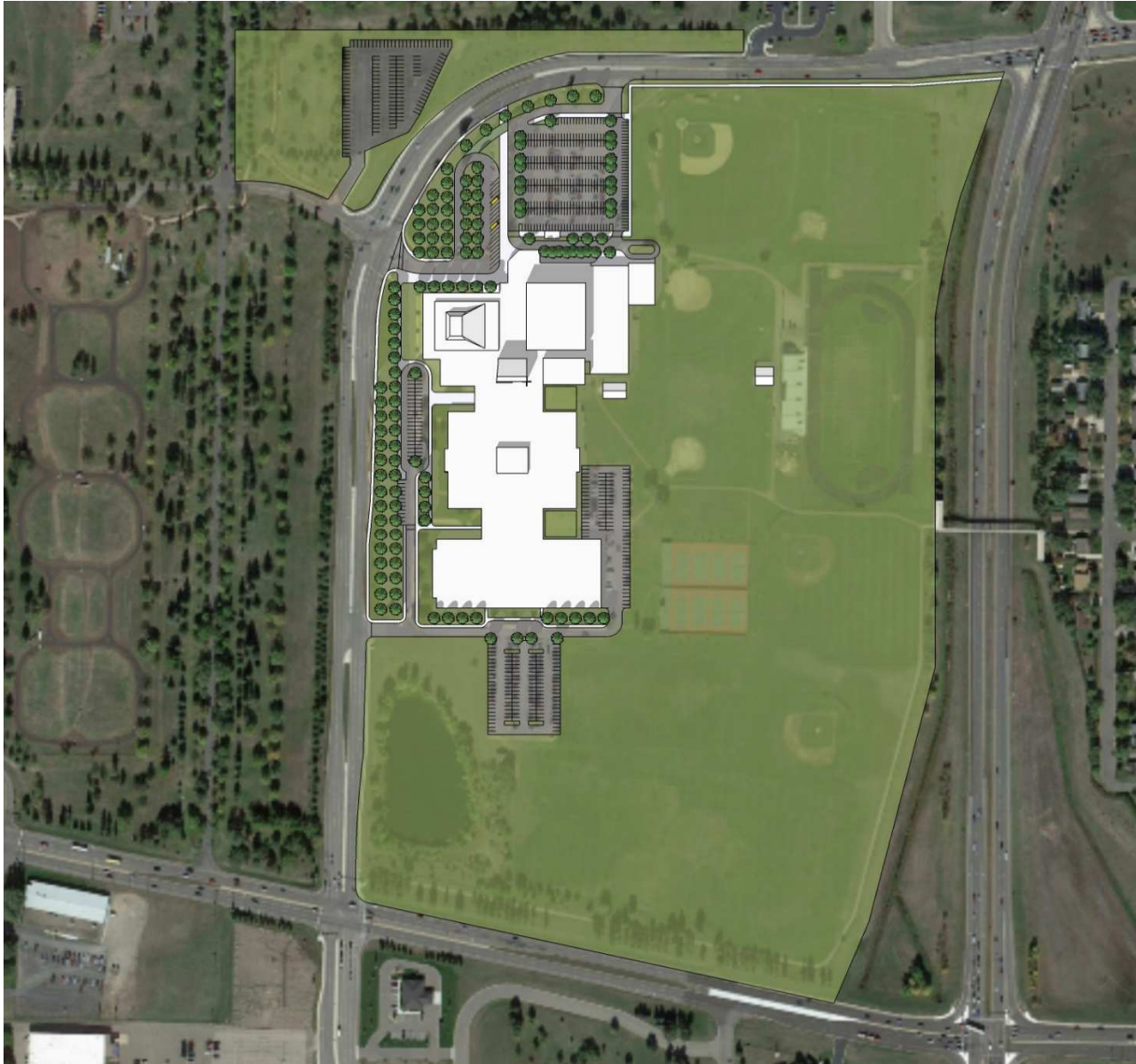
## prospect



# CONNECTIONS

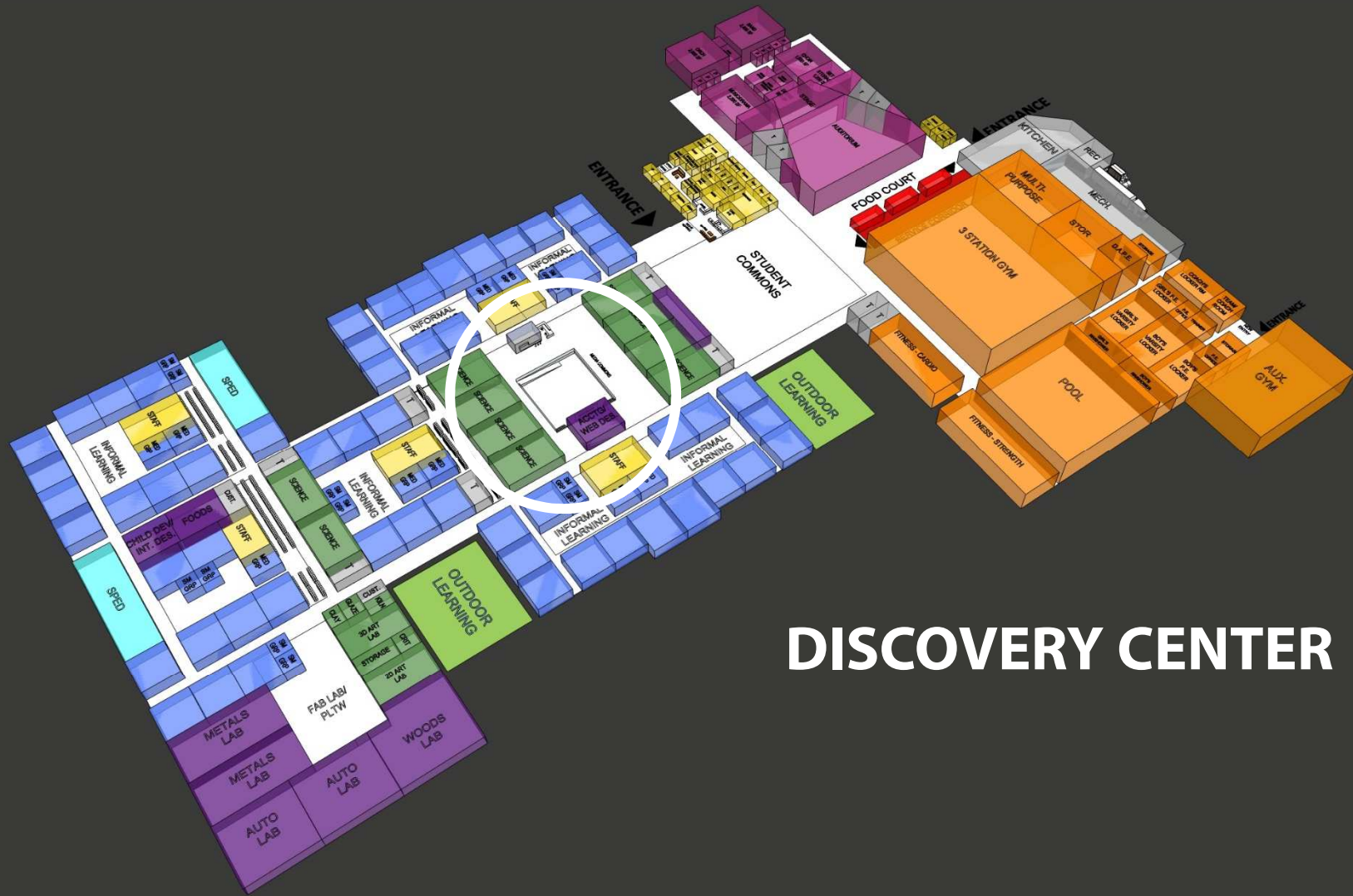
# Where we are...

**APOLLO HIGH SCHOOL**



**APOLLO HIGH SCHOOL**  
**PROPOSED SITE PLAN**





# DISCOVERY CENTER



APOLLO HIGH SCHOOL - DISCOVERY CENTER





# WELCOMING MAIN ENTRY

A 3D architectural rendering of a school building layout. The building is composed of various colored blocks representing different rooms and areas. A white circle highlights the 'MAIN ENTRY' area, which is located near the 'STUDENT COMMONS' and 'FOOD COURT'. The layout includes several 'INFORMAL LEARNING' spaces, 'OUTDOOR LEARNING' areas, and a variety of specialized rooms such as 'METALS LAB', 'AUTO LAB', 'WOODS LAB', 'FAB LAB/PLTW', '3D ART LAB', '2D ART LAB', 'STORAGE', 'FITNESS - STRENGTH', 'POOL', 'AUX GYM', 'KITCHEN', 'MECH', 'BASE', 'LOCKER', 'RESTROOM', 'TOILET', 'SHOWER', 'DRESSING', 'LOCKER', 'RESTROOM', 'TOILET', 'SHOWER', 'DRESSING', 'LOCKER', 'RESTROOM', 'TOILET', 'SHOWER', 'DRESSING'. The text 'Need new image' is visible in the bottom right corner.

Need new image

Need new image



APOLLO HIGH SCHOOL- ENTRY



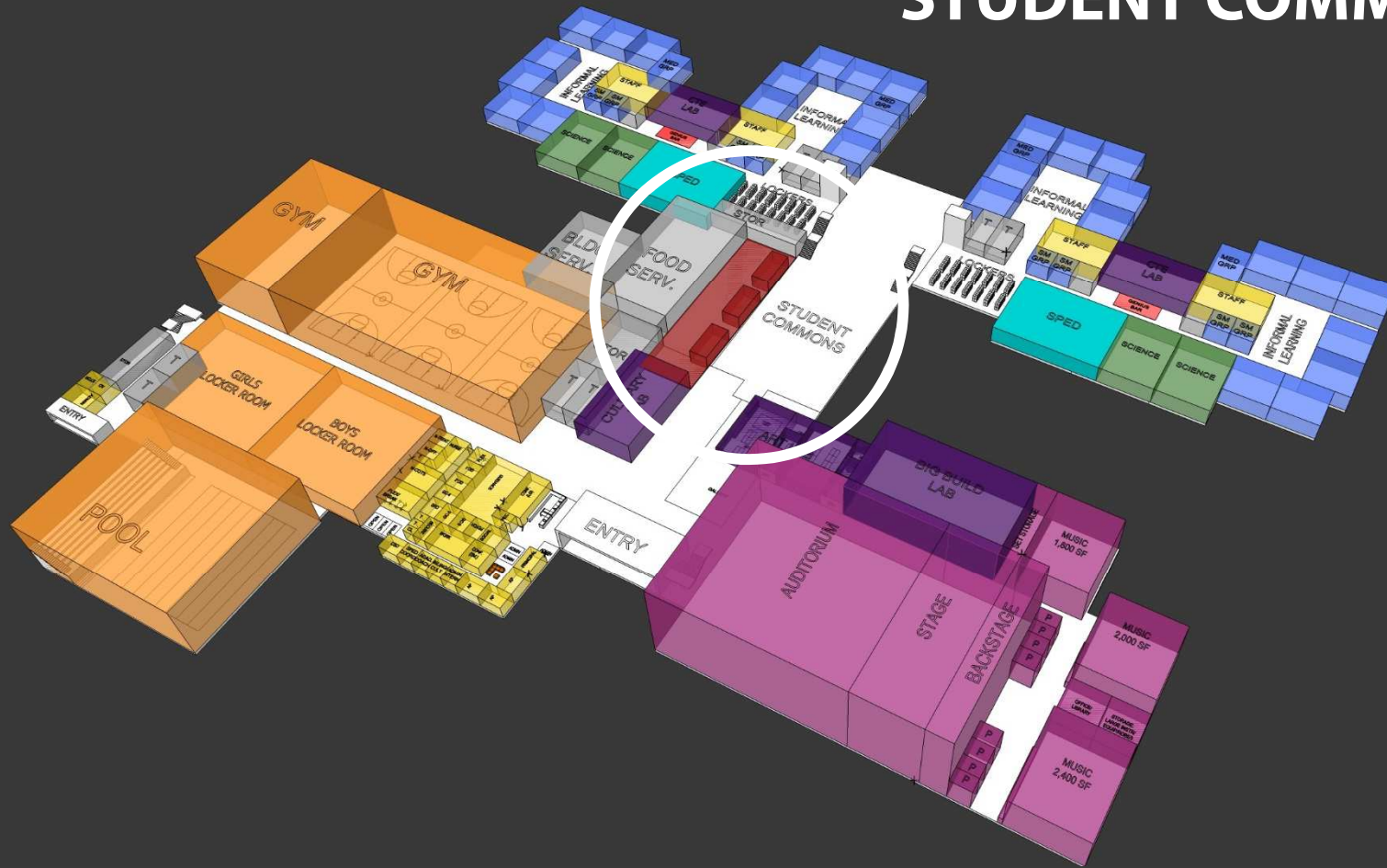
**NEW HIGH SCHOOL**





**NEW HIGH SCHOOL PROPOSED SITE PLAN**

# STUDENT COMMONS



## NEW HIGH SCHOOL



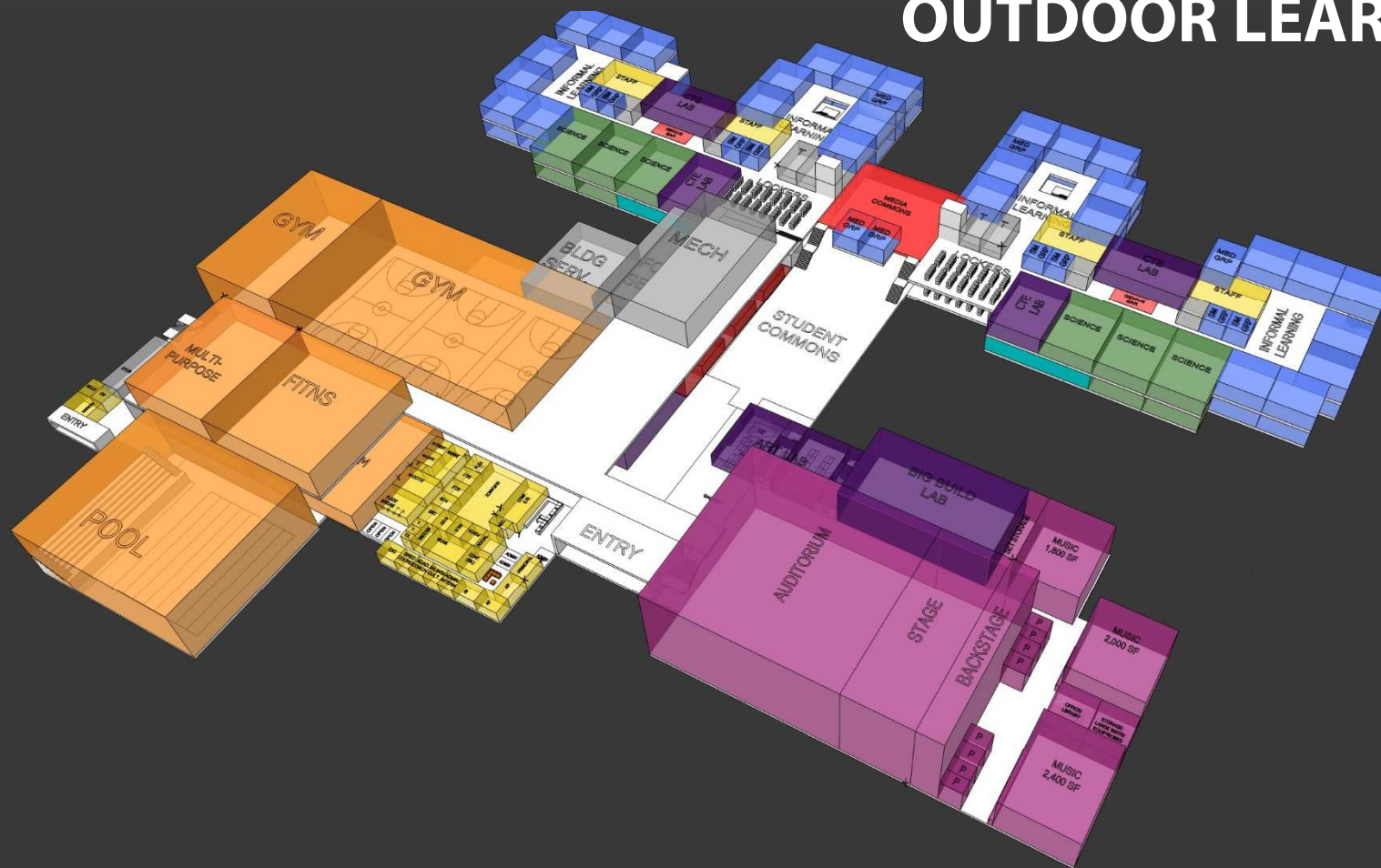


NEW HIGH SCHOOL - ENTRY



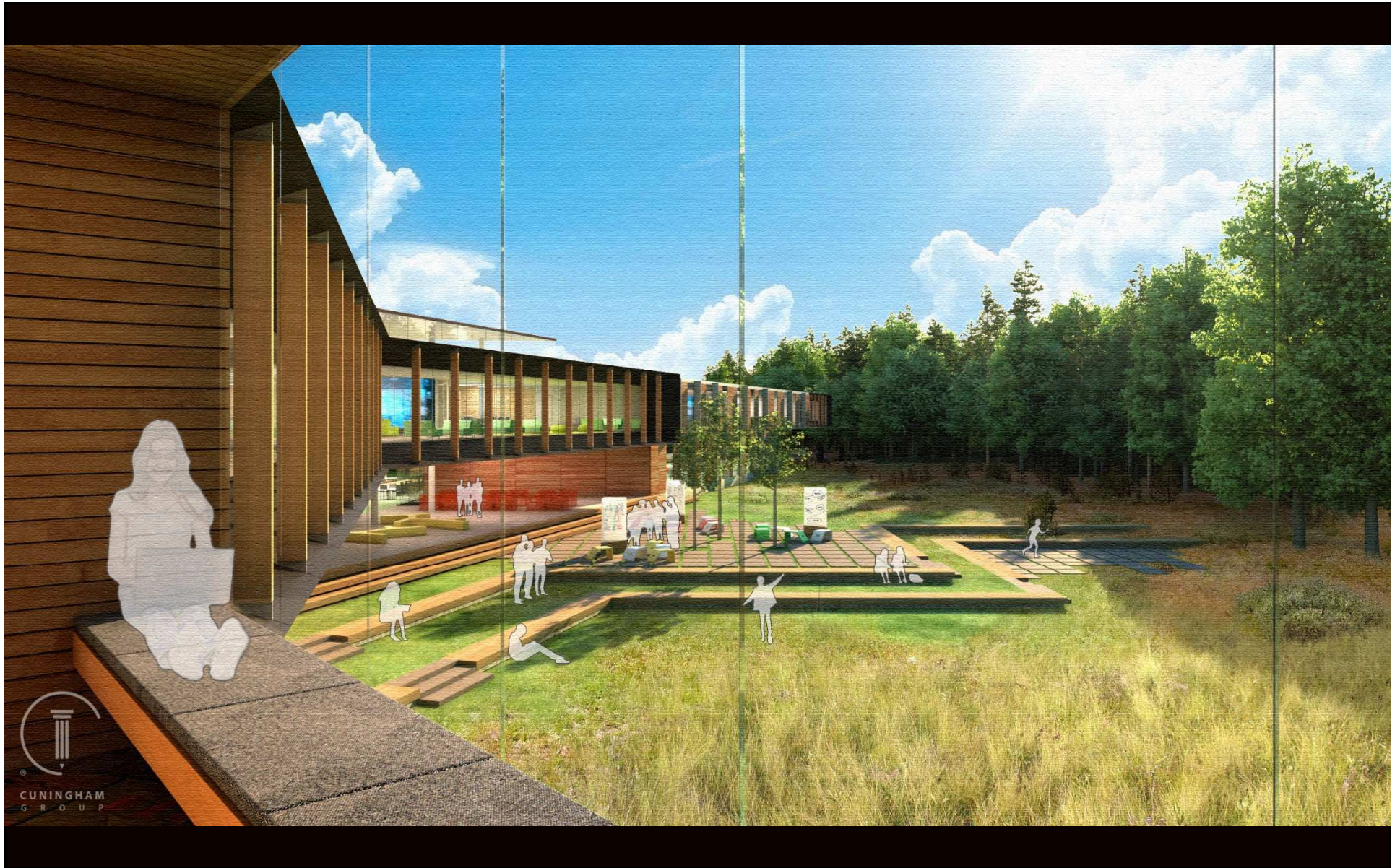


# OUTDOOR LEARNING



## NEW HIGH SCHOOL





# PROGRAM REVIEW

## What's Included?

# Design Parameters

**1,800 student design capacity**  
**@ approximately 200 sf per student**  
**360,000 square feet**  
**85 teaching stations**

# PROCESS

## **Programming Sub-Groups:**

- Offices: Admin, Counseling/Guidance, Nurse
- PE/Athletics
- Kitchen/Dining
- Maintenance/Receiving/Custodial
- General Learning/Staff Collaboration
- Science
- Art/Video/Graphics
- Music/Performance
- Media Commons
- Special Education
- Studios/Labs: CTE/STEM/PLTW/Learning Partnerships/FACS



# Learning Communities

- 56 general learning, classroom equivalents/teaching stations @ 900 sf
- 10 Science specialized lab spaces @ 1,800 sf
- 16 medium group spaces for 10 -15 students @ 400 sf
- 16 small group spaces for 2 – 6 students @ 200 sf
- Special Ed – self contained spaces for level III learners and life skills
- Collaborative learning space (large group, independent learning)
- Staff collaboration space
- Teaching and learning material storage

# LEARNING COMMUNITY PARAMETERS

*Learning Communities need to have:*

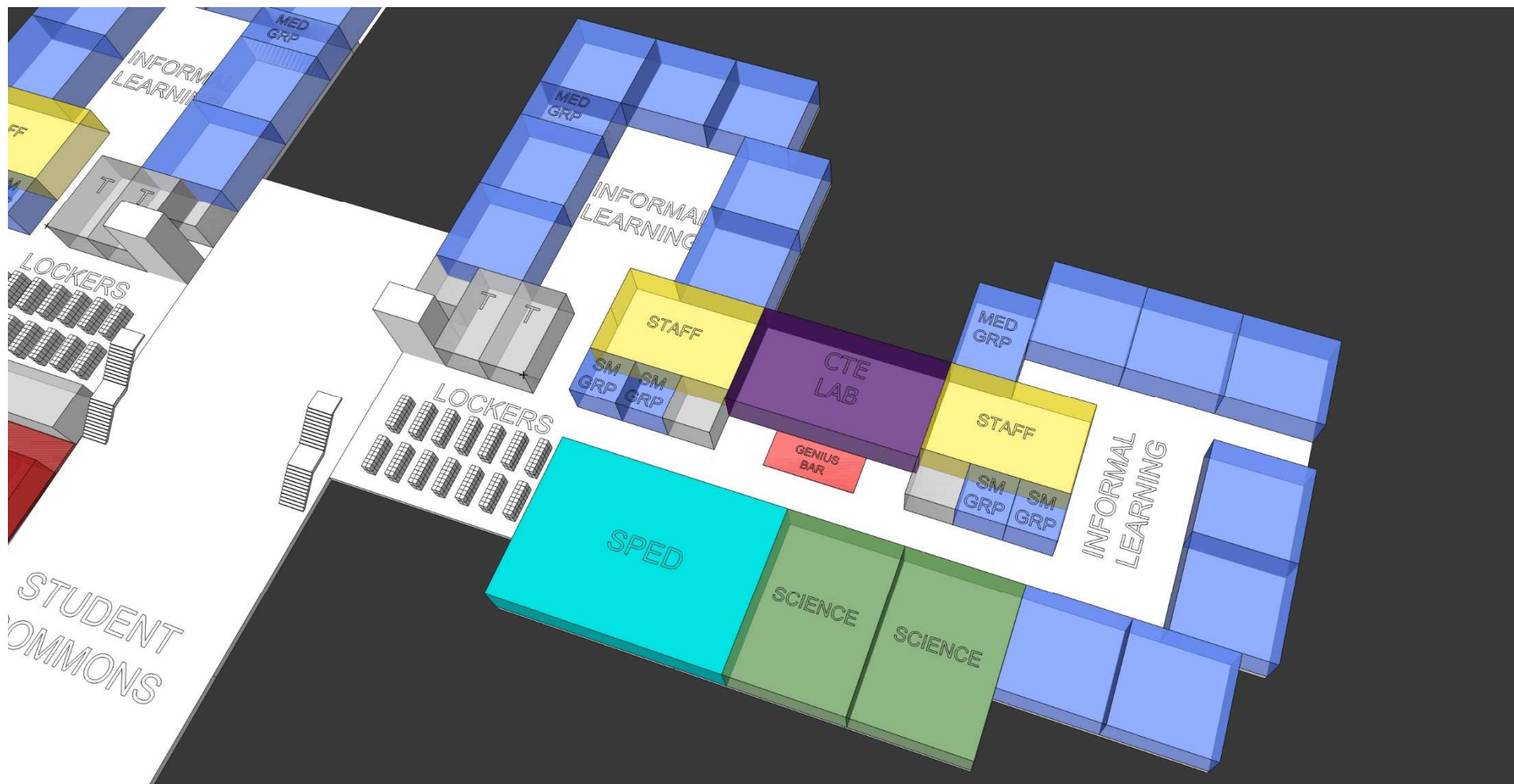
- Flexible Spaces
- Staff Collaboration
- Shared Ownership of Space
- Variety of Space
- Adaptable Spaces
- Collegiate Atmosphere
- Integrated Specialized Spaces



## Learning Communities





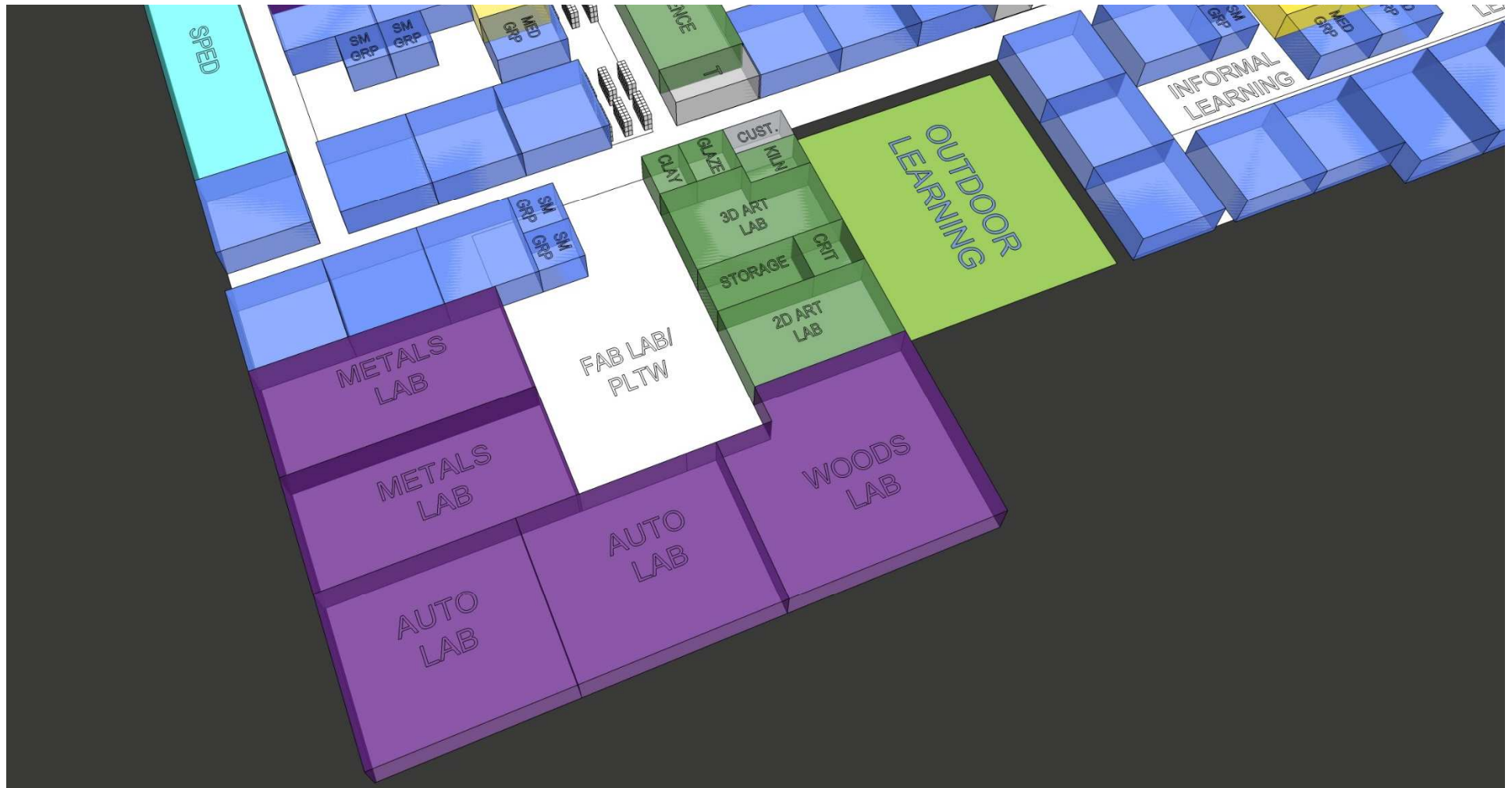


## Learning Communities



# Studios/Labs/Project Spaces

- Media Commons
- 2 art labs – 2D/3D
- CTE programs:
  - Apollo: **Auto, Welding**, Web Design, Accounting, Basic Health Careers, Child Development, PLTW – IED and POE, Interior Design, Digital Photography, Basic Woods, Basic Cooking,
  - New: **Construction Lab, Culinary Arts**, PLTW Bio Med, **Health Careers (CNA/EMS)**, Video Production, Marketing, Web Design, PLTW - IED and POE, Architecture



## Studios/Labs/Project Spaces



## Studios/Labs/Project Spaces

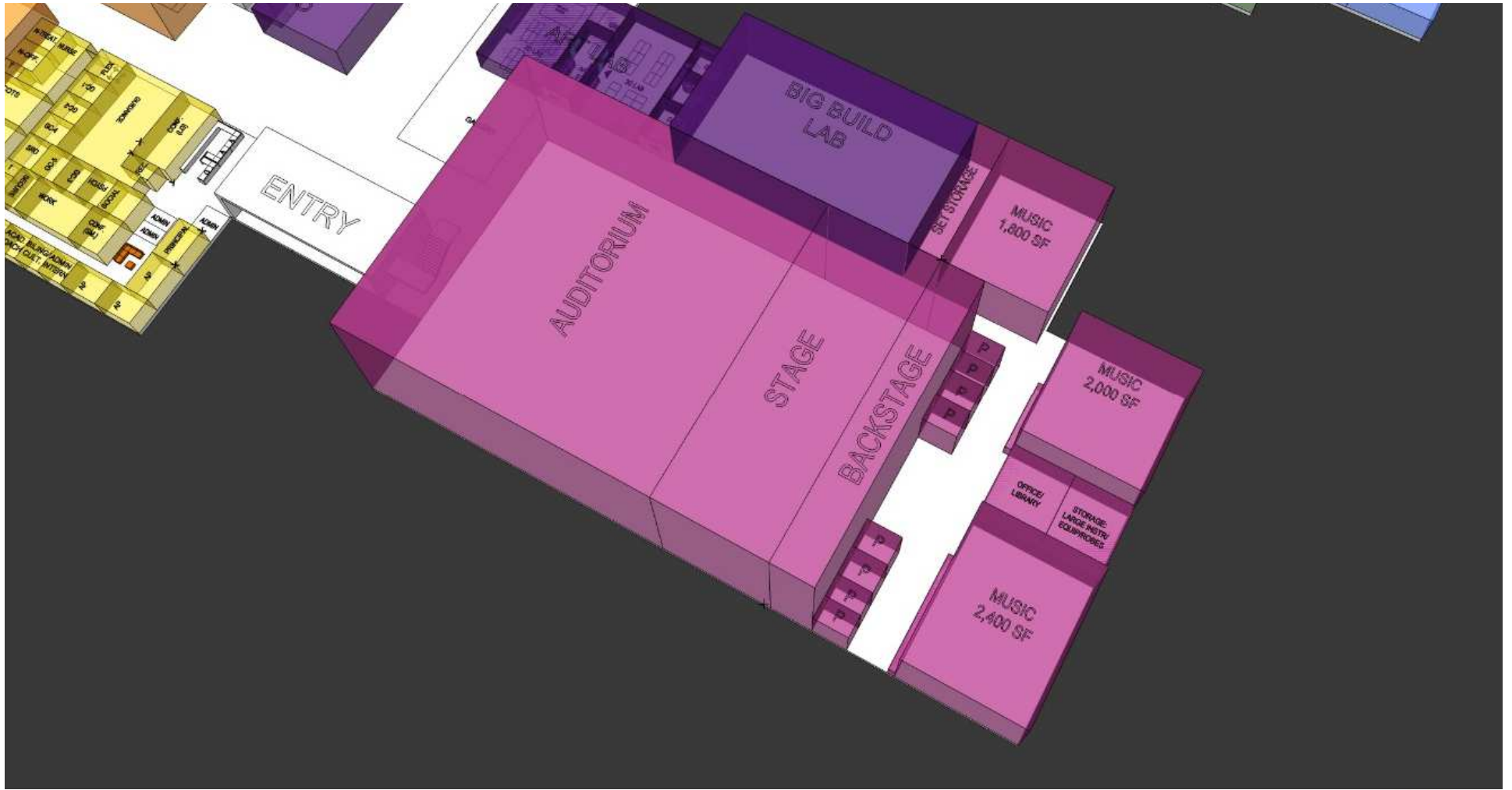
# Music/Performance

- Auditorium and support spaces
- Music Suite including
  - choir, band and orchestra spaces
  - office and music library
  - instrument and robe storage
  - marching band storage
  - practice rooms





## Music/Performance



## Music/Performance

# Activities

- 3 station gym with bleachers
- Auxiliary gym
- 8 lane pool
- Flexible classroom/team room
- Concessions and school store
- Fitness center for cardio (aerobic) and strength (weight training)
- Multipurpose room
- Locker rooms (2 PE, 2 competition) and trainers room
- Storage





## Activities/PE/Athletics

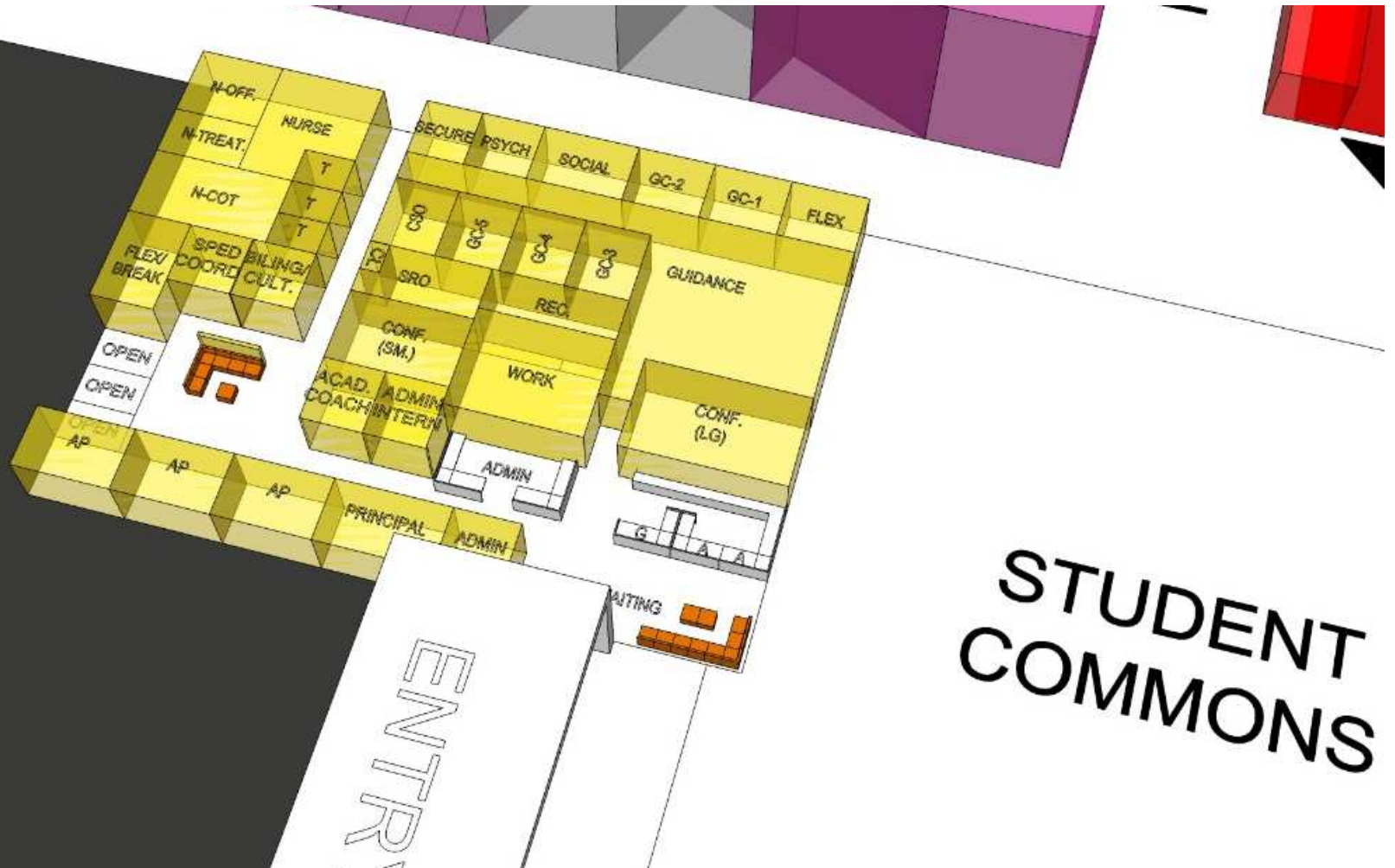


## Activities/PE/Athletics



# Adult/Support Spaces

- Commons/ Cafeteria
- Administration, Counseling, Nurse
- Kitchen
- Receiving
- Storage
- Building Engineer space



# STUDENT COMMONS

Administration







# Administration



**How will the new and remodeled  
high schools improve teaching  
and learning?**

**How will it be different?**



- All students feel welcome, safer, and secure in smaller learning communities which will help increase student achievement
- Differentiation of learning is well-served in smaller learning communities
- Teachers more connected, better retention in smaller learning communities
- Teaching and learning is more integrated and collaborative
- Real world teaching and learning means students are employable and better set for what's next
- Flexibility means spending less money in the future
- Better air quality means a healthy indoor environments that will improved student performance
- Help student achievement
- Up-to-date infrastructure especially technology helps support personalized learning
- Facilities set up to be used beyond the traditional school day – community education, activities, athletics, helps create a better connection of community to schools
- Improved opportunities to collaborate between high schools means more choices for kids and efficient use of resources
- Improved athletic facilities means we can now host regional activities
  - Impact on economy
  - Impact on students – don't need to travel and to bed earlier

# Where we're going...

# Next?

- **Programming Sub-Group meetings (information gathering) complete 8/26**
- **Program Documents for each school completed by mid September – information from sub-groups**
- **Schematic Design starts in August and is 75% complete by November 3<sup>rd</sup>**
- **Design Development and Construction Documents through next spring and into summer**
- **Some work possible next summer**

# Information...





St. Cloud Area School District 742

Prepare. Engage. Educate. Empower. Inspire.

[Español](#) | [Soomaali](#)

[COMMUNITY](#)

[FAMILIES](#)

[DIRECTORY](#)

[EMPLOYMENT](#)

[About Us](#) ▾

[Academics](#) ▾

[Communications](#) ▾

[Community Ed](#) ▾

[Departments](#) ▾

[Student Services](#) ▾



[Home](#) / [Communications](#) / [Referendum 2015](#)

## Referendum 2015

[Overview](#)

[FAQs](#)

[Fact Sheet](#)

[High School Design Process](#)

[Polling Place Finder](#)

[Residential Survey](#)

[Tax Calculator](#)

[Voter Information](#)

## Referendum 2015

The St. Cloud Area School District is poised to launch its students into 21st century learning and the future workplace with a proposed \$167,000,000 building bond referendum and special election on November 3, 2015.

The referendum will pose one question on the ballot that would fund:

- acquisition of land and construction of a new Technical High School on 33rd Street South in St. Cloud; (113,800,000)
- renovation of Apollo High School and site upgrades; (46,500,000)
- safe entrances and enhanced security at all schools in the district; (2,500,000)
- technology infrastructure and devices for anytime/anywhere access to learning (4,200,000.)

District 742 has an obligation to provide learning environments that meet both the physical and social-emotional needs of all students while preparing them for success in a technological, global society.

This bond referendum would address our outdated facilities,



## More Questions?

Email: [bond2015@isd742.org](mailto:bond2015@isd742.org)

Phone: 320-224-9012

# Thank You!

