



Welcome to Intro to Art!

Your teacher: Ms. Furcht

“In every art form there is a language. To succeed, you must learn to express yourself in that particular language.”

Goertz

Some assume only the talented can create fine art works. This is simply not true. Through practice, viewing quality examples, and constantly striving to improve, you will gradually build design and technical skills.

Grades

Graded projects 65%

Tests/Written 5%

Participation 30% - End of trimester evaluation 50 point scale and daily exercises

90-100 A range / 80s B range /

70s C range / 60s D range /

50s or lower Failing

A 3D graphic of the letters A, B, C, D, E, and F, followed by a question mark. The letters are rendered in a dark green, textured, blocky font and are arranged in a slightly receding perspective from left to right.

How can you earn an A in this class?

7 easy steps to follow

An “A” Student is one who...

- 1) Demonstrates an exceptional **attitude**, enthusiasm and spirit towards work.
- 2) Completes **ALL** assignments
- 3) Creates **well-crafted artwork** or shows great improvement and motivation in their work.

4) Never, ever gives up - even when things get frustrating. This student sticks with things, has tenacity to follow through.

5) Takes the initiative to **challenge** him/herself independently.

6) Adds to the classroom community by being a positive role model. This can include showing respect to others in the room, willingness to help or assist others, and sharing ideas in group discussions and critiques.

7) Excellent attendance. Arrives on time, prepared and ready to work.

Attendance

Your attendance and focus during class is imperative to your success.

Unexcused absences will result in an automatic loss of 5 points.

Students with excused absences may also lose participation points depending on the lesson.

If You Need to Leave the Classroom...

1. Get permission
2. Sign out and back in when you return.

There is a 5 minute limit

a reasonable # of times.


If you abuse it you loose it!

Unexcused absences

More than 15 minutes tardy or absence from the room.

Leaving the classroom without permission (you will be dismissed from your seats).

Unverified absence (nurse for example).



You will be assigned day 3 or 4 IS unless otherwise notified. You are responsible to participate on your assigned class day.

You must sign in on IS days! You
will be expected to stay if...

you have any missing work.

you have any unexcused absences
since the last IS day.

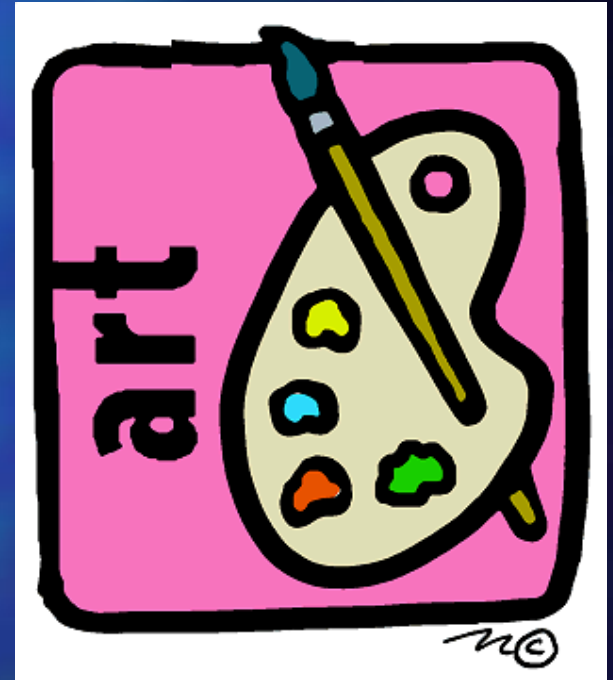
Ms. Furcht decides it is necessary.

Water bottles are allowed in class. See your handbook on policies related to cell phone use, food and drinks.

The art room is always in need of old magazines, calenders, towels/rags, plastic bags and still life objects.

Donations would be appreciated- some extra credit is available.

I'm glad you are here!



Let's have a great trimester!