



**CUNINGHAM**  
G R O U P



# **NEW HIGH SCHOOL BOARD WORKSHOP**

St. Cloud Area School District

# PURPOSE

***The purpose of this meeting is present current status of New High School Design***

# MEETING AGENDA

- A. REVIEW OF PROJECT PARAMETERS
- B. REVIEW NEW HIGH SCHOOL PLAN
- C. LEARNING NEIGHBORHOODS
- D. SCHEDULE REVIEW & IMPLICATIONS
- E. OTHER BUSINESS



# project parameters

- **Referendum question amount of \$104.5 million**
- **Construction budget of \$83.5 million, building and site**
- **1600 student capacity** (vs. 1800)
- **320,000 square feet** (200sf/student)
- **800 seat auditorium** (vs. 1200 seats)
- **3-station gym with 1 aux. gym, 4 gyms total**
- **Includes the pool as previously defined**
- **Re-starting in the middle of schematic design phase**
- **Building on the previous programming and design work**
- **Work with this High School Design Committee**

**WE SEE** inviting, student-centered designs that integrate environmental, community and technological resources to cultivate a love of learning in all students. By celebrating beauty, function and sustainability, we build on a tradition of excellence that serves as a source of pride for students, staff and the community.



- Activities & Athletics
- Administration
- Art & CTE
- Building Support
- Circulation, Commons & Informal Learning
- Learning
- Performing Arts
- Science
- Special Education



# LEARNING NEIGHBORHOODS

- Flexible Spaces
- Staff Collaboration
- Shared Ownership of Space
- Variety of Space
- Adaptable Spaces
- Collegiate Atmosphere
- Integrated Specialized Spaces



# LEARNING COMMUNITIES

## MAIN LEVEL





# LEARNING COMMUNITIES

## UPPER LEVEL



# LEARNING COMMUNITIES

3 PER LEVEL, 6 TOTAL, 7 T.S./L.C.





# LEARNING COMMUNITIES

3 PER LEVEL, 6 TOTAL, 7 T.S./L.C.







# LEARNING COMMUNITIES

3 PER LEVEL, 6 TOTAL, 7 T.S./L.C.







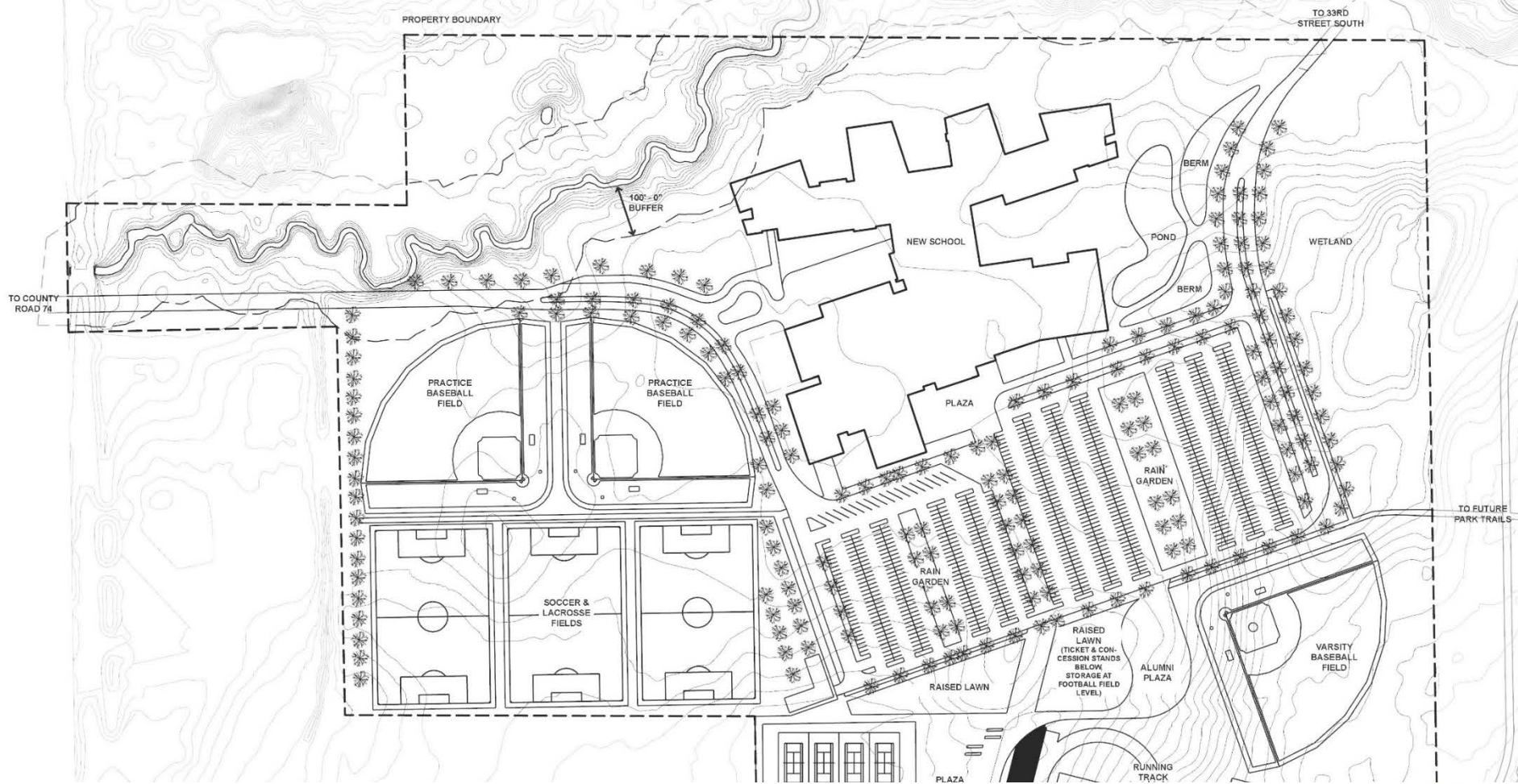
# SITE PLAN



## NEENAH CREEK PARK



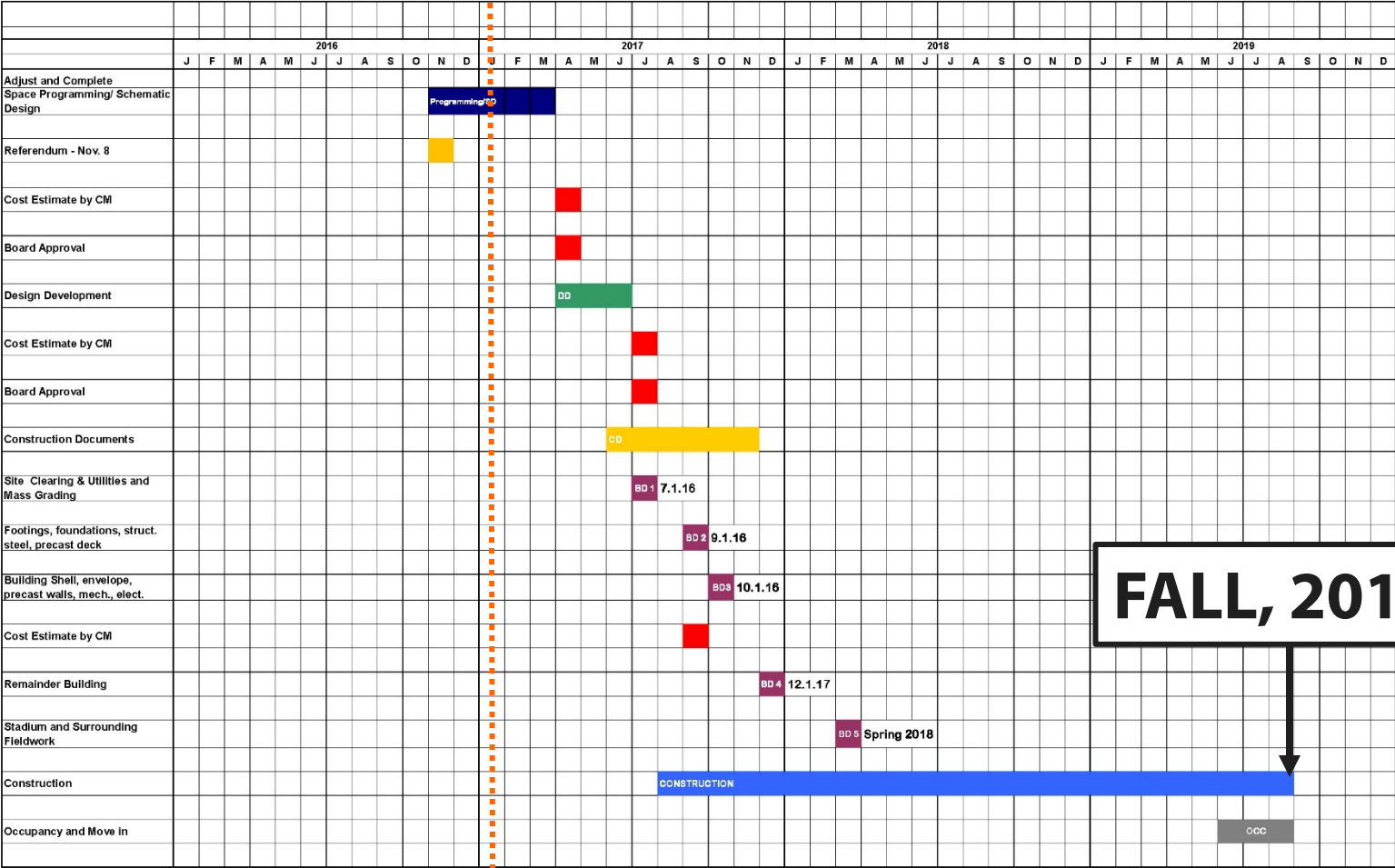




# PARTIAL SITE PLAN



← We are here.



FALL, 2019



## **SCHEDULE IMPLICATIONS & FACTORS, FAST TRACK MODEL**

- **Multiple Stacked Bid Packages**
- **Award of Packages Prior to Knowing the “Whole Picture” from a Budget Standpoint**
- **Budget Rigidity with Multiple Packages**
- **Construction Market Uncertainty / Volatility**
- **Design Coordination of Building Systems with Early Packages**
- **Limited Float Time during Construction – Weather, Lead-Times, Delivery Delays, etc.**
- **Regulatory Approvals and Reviews Processes**
- **Access Road and Utility Work Coordination**
- **Winter Conditions – Impacts on Schedule and Budget**
- **Site Conditions – Soils, Rock, Balance, etc.**

# **PARTNERSHIP UPDATE**



**CUNINGHAM**  
G R O U P



**THANK YOU!!**

St. Cloud Area School District