

PURPOSE

The purpose of this meeting is share the current status of the New High School Design.

PRESENTATION OUTLINE

- A. Review of Project Parameters
- B. PROJECT INFORMATION UPDATE
 - 1. Site
 - 1. Meetings with City, County
 - 2. EAW
 - 2. Overall Building Plan
 - 3. CTE & Media
 - 4. Activities
 - 5. Music and Performing Arts
- C. QUESTIONS



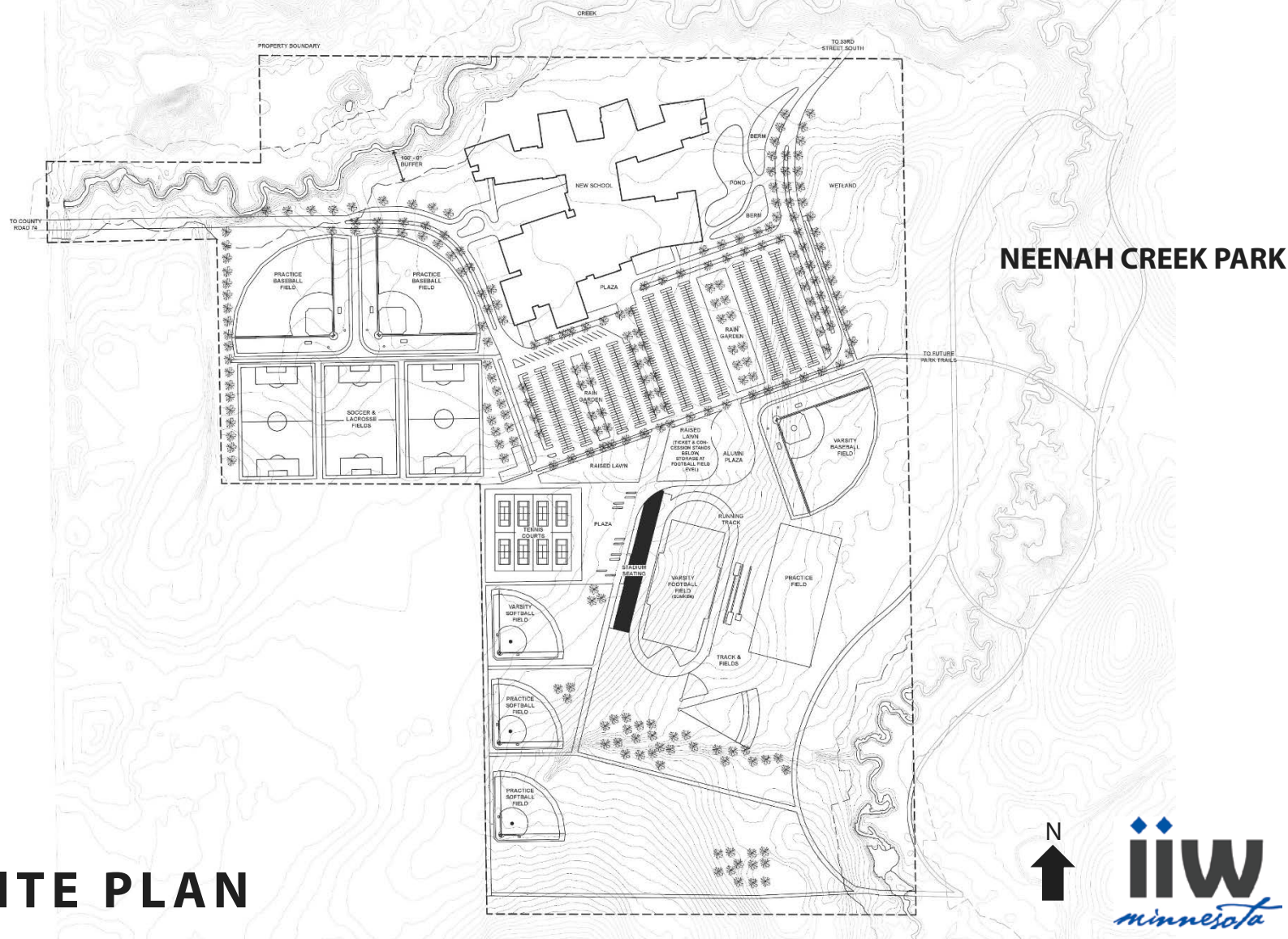
project parameters

- **Referendum question amount of \$104.5 million**
- **Construction budget of \$83.5 million, building and site**
- **1600 student capacity** (vs. 1800)
- **320,000 square feet** (200sf/student)
- **800 seat auditorium** (vs. 1200 seats)
- **3-station gym with 1 aux. gym, 4 gyms total**
- **Includes the pool as previously defined**
- **Re-starting in the middle of schematic design phase**
- **Building on the previous programming and design work**
- **Work with this High School Design Committee**

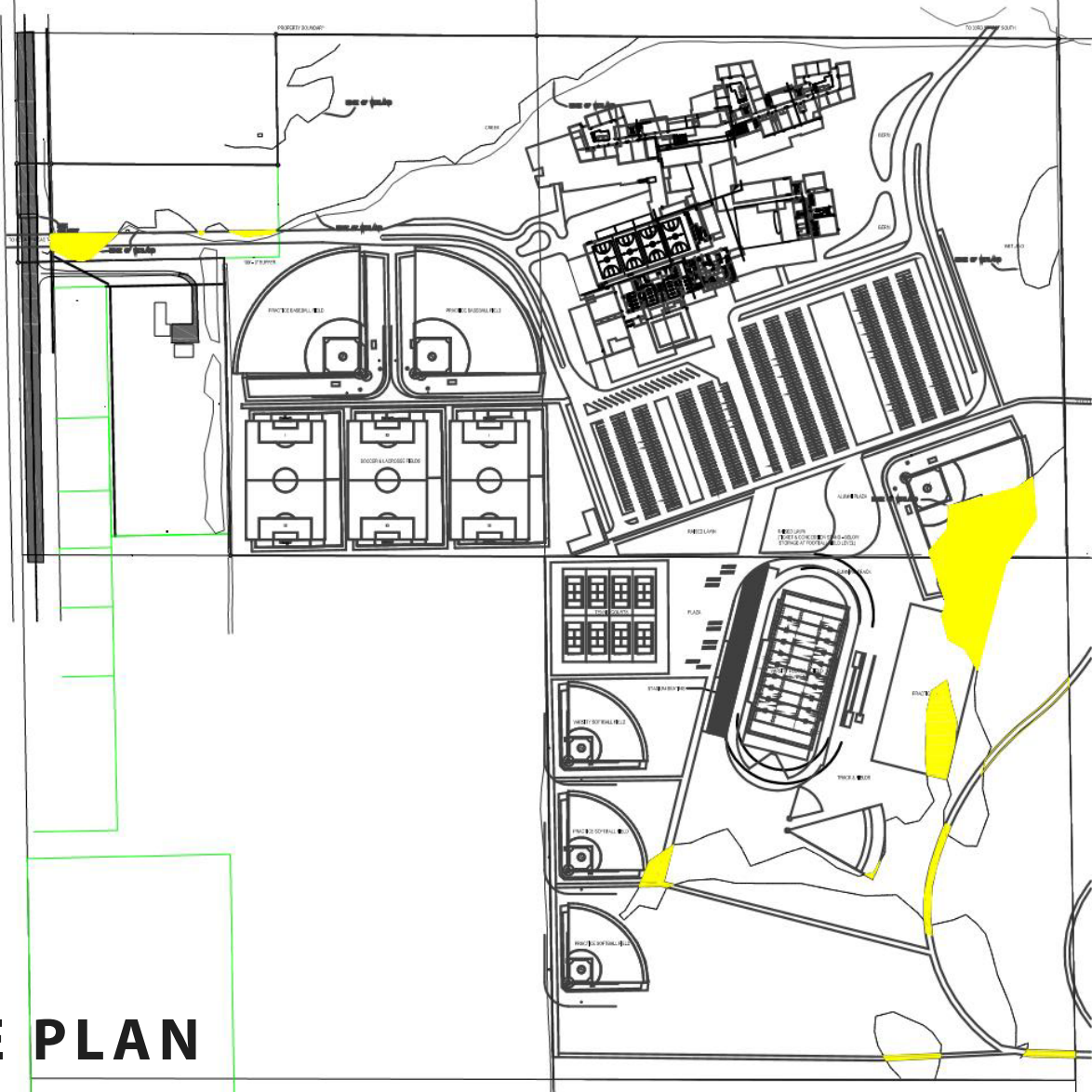
WE SEE inviting, student-centered designs that integrate environmental, community and technological resources to cultivate a love of learning in all students. By celebrating beauty, function and sustainability, we build on a tradition of excellence that serves as a source of pride for students, staff and the community.

SITE
update

SITE PLAN



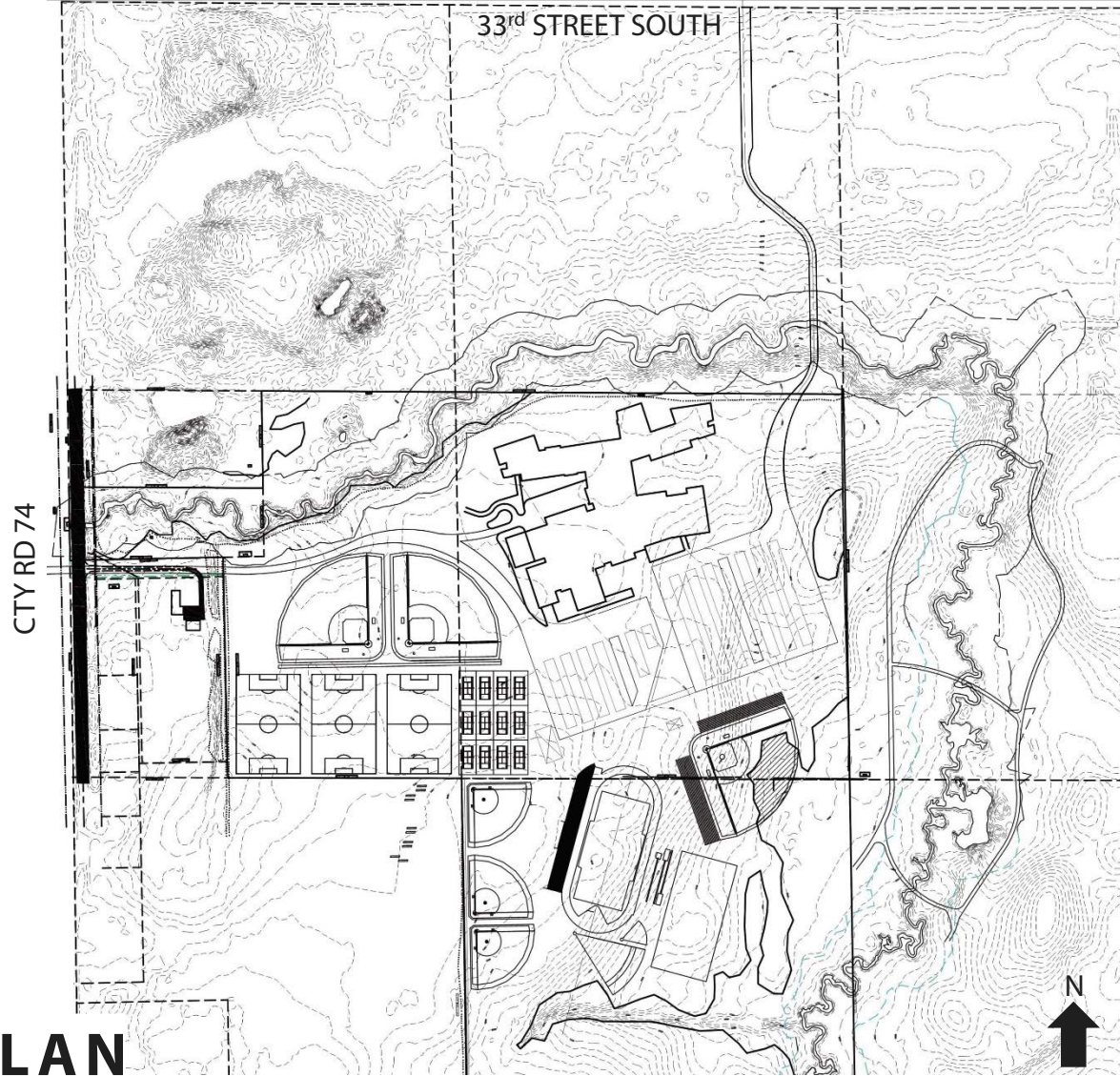
SITE PLAN



NEENAH CREEK PARK



SITE PLAN



OVERALL PLAN DIAGRAM

update





- Activities & Athletics
- Administration
- Art & CTE
- Building Support
- Circulation, Commons & Informal Learning
- Learning
- Performing Arts
- Science
- Special Education

LEVEL 2 01.19.17



LEVEL 1





LEVEL 2

**CAREER & TECH ED/
MEDIA
*update***



LEVEL 1 – CTE/MEDIA



LEVEL 2 – CTE/MEDIA

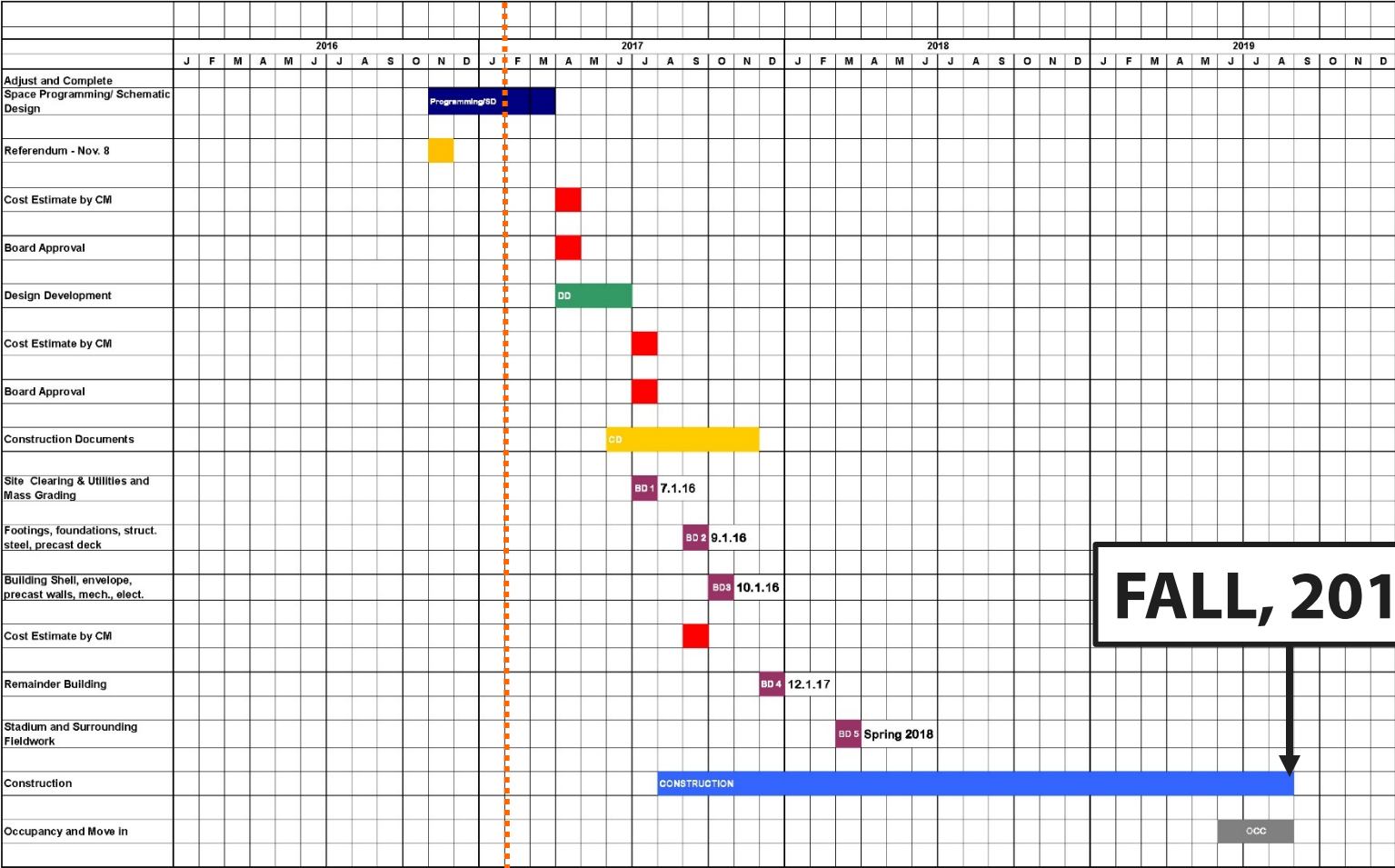
REVIEWED

MUSIC AND PERFORMING ARTS

ACTIVITIES

ADMINISTRATION

← We are here.



FALL, 2019



CUNINGHAM
G R O U P



THANK YOU!!

St. Cloud Area School District